



PSS® SINCAL

Enhanced Modules

Enhanced Modules for Planning and Managing Operations in Electrical Networks

These calculation methods provide enhanced functions for interpreting and optimizing electrical transmission and distribution networks.

The following modules are available:

- Dimensioning of Low-Voltage Networks
- Optimal Branching
- Load Flow Optimization
- Compensation Optimization
- Multiple Faults
- Contingency Analysis
- Help Functions for network planning tasks

Dimensioning of Low-Voltage Networks

This simulation combines load flow and short circuit calculations. In accordance with VDE standard 0102, PSS®SINCAL uses the minimum single-phase fault currents to determine the maximum permitted rated current of the appropriate fuse.

For this purpose, the program examines the protected zone under investigation with help of a traveling fault to determine the point where the minimum fault currents flow through the adjoining fuses.

PSS®SINCAL identifies the existing fuses that have rated current in excess of the maximum permitted value. The program also notifies the user when the load current exceeds the maximum permitted current of the fuse.

Optimal Branching

In meshed networks, this method can be used to calculate the best positions for connecting points so these can be transferred to the network configuration at the press of a button. This lets you break down the network with minimum transmission losses into a simple radial net-

work. The load flow calculations determine the point of minimum voltage in a program loop to isolate the feeder of minimum current at that point. This process continues until the whole network has been unmeshed.

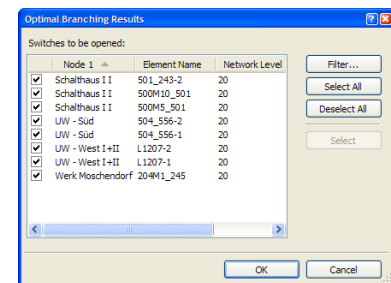


Figure 1: Results dialog box with optimal branching

This method is particularly good for pinpointing the correct disconnecting points between the different transformer ranges.

The important properties of this calculation method are:

- Determining the radial network with the lowest losses
- Calculating across network levels
- Defining network groups that should not open
- Automatically taking-over open switches
- Selecting all open elements in the network graphics

Load Flow Optimization

This calculation method minimizes transmission losses in a given network.

In this case, the system variables are generator voltages, generator reactive powers and transformer transformation ratios. The limitations include the loading of plant and equipment, the voltage range and the P/Q diagram allowed for the generators.

The output display is the same as with normal load flow calculations. The optimum transformer

tap positions and the generator powers from the calculations can be transferred to the network configuration at the press of a button.

Compensation Optimization

The purpose of PSS®SINCAL Compensation Power calculations is to reduce the reactive power at transformer low-voltage terminals. Load flow calculations for the entire network provide the basis for calculating compensation power. Compensation power can be either inductive or capacitive.

When determined compensation power is installed, this has the following advantages for the network:

- It reduces the amount of apparent power transported in the network
- It reduces the load of the equipment
- It reduces transmission losses
- It improves voltage in the network
- It helps to prevent violations of voltage limits
- It reduces the need for new transformer stations
- It reduces costs for supplying reactive power

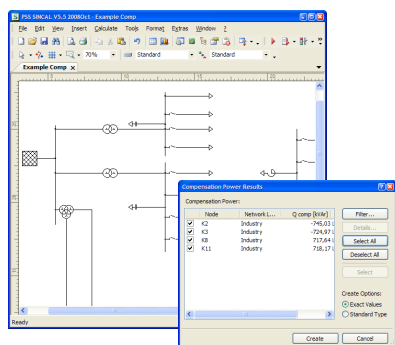


Figure 2: Determining compensation power

Multiple Faults

When faults and interruptions occur in several places simultaneously, e.g. in the not-so-rare case of a double earth fault, the multiple fault calculation ascertains the steady-state distribution of current and voltage in the network. The actual switching configuration is taken into account as preloading.

These calculation methods can, among other things, simulate the following kinds of disturbances that often occur in practice:

- Single-phase short breaks in rigid grounded networks
- Three-phase short breaks in deleted networks
- Double ground leakage in cable networks

Contingency Analysis

The purpose of this calculation method is to evaluate load flow in distribution networks when the following elements malfunction:

- Individual elements
- Elements that can operate only together (function groups)
- Overloaded elements

Malfunction simulation provides network carriers with information on reliability and the deficiencies in the network. The carrier gets important network information on:

- n - 1 criteria for network operation
- Breaks in supplies
- Overload conditions during network element malfunctions
- Impossible network conditions during network element malfunctions

- Priorities of network development measures
- Influences on consumer contractual agreements

Help Functions for Network Planning Tasks

A number of help functions are integrated into the user interface that will help you find the best answers to questions often coming up in network planning. These include, among other things:

- Optimal connection points for new loads
- Optimal routes for new supply lines
- Resupply when equipment malfunction
- Network behavior when motors are accelerating

These help functions are integrated into the user interface to provide optimum support when you are working. Most functions can be called up directly from the pop-up menu of the respective network element. Optimally designed dialog boxes are used to enter the control settings you need and present the results in clearly arranged manner.

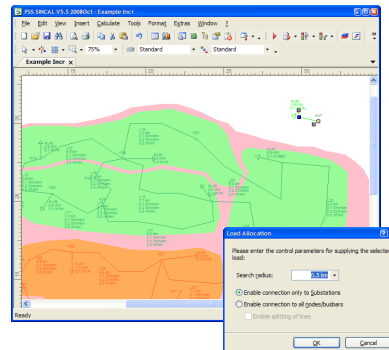


Figure 3: Load allocation

Published by and copyright © 2009:
Siemens AG
Energy Sector
E D SE PTI
Freylebenstrasse 1
91058 Erlangen, Germany

www.siemens.com/energy/power-technologies

Siemens Energy, Inc.,
Power Distribution, T&D Service Solutions
Siemens Power Technologies International
400 State Street
PO Box 1058
Schenectady, NY 12301-1058

Siemens Transmission and Distribution Ltd
PTI
Sir William Siemens House, Princess Road
Manchester, M20 2UR
United Kingdom

For more information, please contact
our Customer Support Center.
Phone: +49 180 524 70 00
Fax: +49 180 524 24 71
(Charges depending on provider)
E-mail: support.energy@siemens.com

Power Distribution Division
Printed in Germany
Printed on elementary chlorine-free
bleached paper.

All rights reserved.
Trademarks mentioned in this document
are the property of Siemens AG, its affiliates,
or their respective owners.
Subject to change without prior notice.
The information in this document contains general
descriptions of the technical options available,
which may not apply in all cases.
The required technical options should therefore be
specified in the contract.

SWSC06-EN-200905