

PSS[®]SINCAL

Modeling of wind turbine generators

At a glance

PSS[®]SINCAL is a power system analysis software well-suited to efficiently perform wind power simulation and integration studies.

The challenge

Large scale integration of wind power worldwide and particularly in Europe (with more than 300 GW planned by 2030) makes it increasingly important to evaluate the resulting effects on power systems. Influencing factors are:

- Intermittent generation characteristics
- Larger distances between generation and load
- Need for additional reserve power
- Increasing power transfer and changes in overall power flow
- Impact on power system stability
- Reduction of reactive power reserves
- Harmonic disturbances
- Influence on protection settings

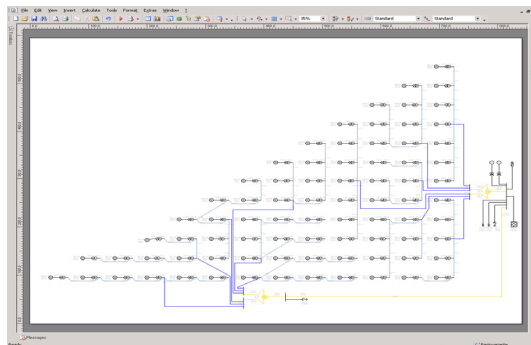


Figure 1: Wind park model

Simulation software which adequately reflects the special characteristics of wind power plants can assist in evaluating these factors before connecting wind generators to existing networks.

Our solution

Siemens PTI has made its in-depth experience in wind power modeling available as part of the software PSS[®]SINCAL. It comprises necessary models and analysis methods to facilitate system studies:

- For feasibility studies, where the decision for a specific generator type is not yet made, generic models for squirrel-cage induction generators, doubly-fed induction generators (DFIG) and direct driven synchronous generators are provided. These consider e.g. pitch control, wind speed, crowbar, PWM controllers, etc.
- In case of detailed interconnection studies, models from specific vendors have to be used. In general these (encrypted) models are provided by the vendors, e.g. as MATLAB[®] Simulink[®] dlls. PSS[®]SINCAL allows for embedding them directly into the simulation as shown in Figure 2 below.

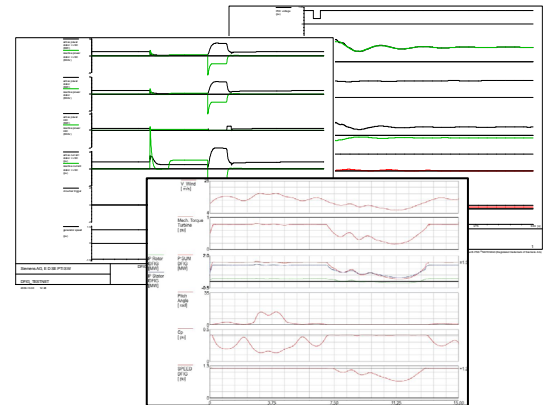


Figure 2: Simulation results using embedded, MATLAB[®] Simulink[®] vendor model

Siemens PTI – Software Solutions

Answers for energy.

SIEMENS

Grid Code Compliance Toolbox

PSS®SINCAL offers one overall network model that serves the whole range of simulation modules necessary for the complete scope of investigations such as load flow and short-circuit calculation, going on with harmonics, protection and dynamic simulation (RMS and EMT). Enhanced comparison capabilities across different scenarios (e.g. full power output, no wind operation, voltage drops to different levels and different times periods, harmonic distortions) are provided.

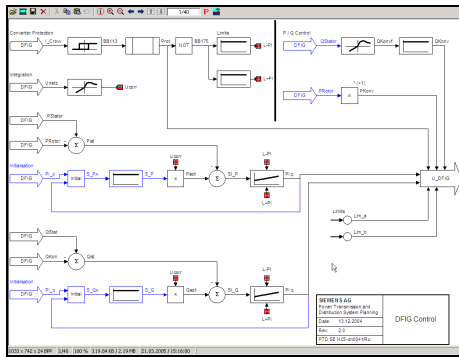


Figure 3: Example for a DFIG controller

Dynamic simulation

Dynamic simulation is a key aspect. To fulfill the grid code and / or connection agreements – besides the steady state operation scenarios in load flow analyses – it is also necessary to study different dynamic simulations including unbalanced short circuit cases (see Figure 4).

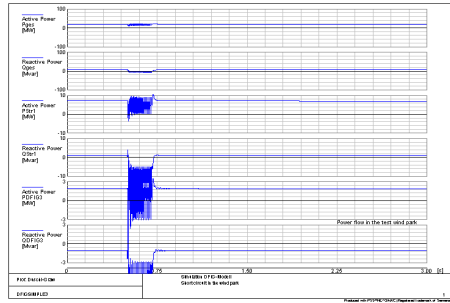


Figure 4: Simulation of unbalanced short circuits

Also, transient stability simulation (see Figure 5) enables fault ride through (FRT) performance and voltage and / or reactive power control studies to evaluate grid code compliance. The same applies for voltage fluctuation studies for the respective transformer.

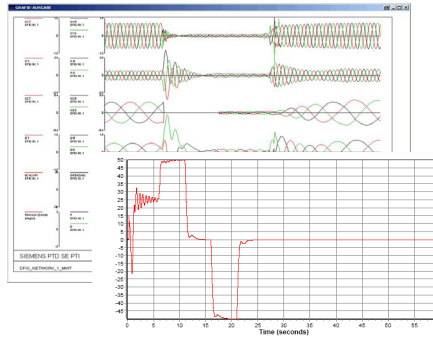


Figure 5: Electromagnetic transient simulation

Harmonic studies

In order to simulate the reactive capability of the wind power plant and to compare it to the grid requirements, or to select the correct reactive power com-

pensation equipment (such as SVCs) in addition to the filters to limit the harmonic emission according to standards like IEC 61400-21, extended harmonic studies have to be performed in a frequency range of 100-2500 Hz. Resonance networks remarkably reduce the modeling efforts.

Grid connection models

Different connection methods, like classical HVDC, AC or VSC-HVDC, can be modeled in detail (see Figure 6).

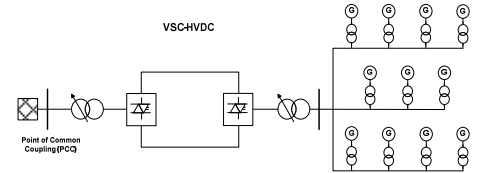


Figure 6: HVDC connection model

In addition, neutral grounding and safety earthing studies, e.g. at the transformer platforms, might be required.

Data import and export

Extensive import and export options (including data base interfaces and Microsoft® Excel® spreadsheets) allow the easy setup of a model. PSS®SINCAL especially supports the import and export of PSS®E file formats and the new XML-coded ENTSO-E CIM Profile.

Product information

PSS®SINCAL is part of the Power System Simulator (PSS®) product suite by Siemens Power Technologies International (Siemens PTI). Siemens PTI provides network planning software, network consulting and training services within the Siemens Energy Sector.

Published by and copyright © 2011:
Siemens AG
Energy Sector
E D SE PTI
Freyeslebenstrasse 1
91058 Erlangen, Germany

www.siemens.com/energy/power-technologies

Siemens Energy, Inc.
Power Distribution, T&D Service Solutions
Siemens Power Technologies International
400 State Street
PO Box 1058
Schenectady, NY 12301-1058

Siemens Transmission and Distribution Ltd
PTI
Sir William Siemens House, Princess Road
Manchester, M20 2UR
United Kingdom

For more information, please contact
our Customer Support Center.
Phone: +49 180 524 70 00
Fax: +49 180 524 24 71
(Charges depending on provider)
E-mail: support.energy@siemens.com

Power Distribution Division
Printed in Germany
Printed on elementary chlorine-free
bleached paper.

All rights reserved.
Trademarks mentioned in this document
are the property of Siemens AG, its affiliates,
or their respective owners.
Subject to change without prior notice.
The information in this document contains general
descriptions of the technical options available,
which may not apply in all cases.
The required technical options should therefore be
specified in the contract.

SWSC72-EN-201105