



PSS® SINCAL

Tool Box for Network Planning

Comprehensive Visualization and Evaluation Functions

PSS® SINCAL is not only flexible as far as working on the network is concerned; the way you display input data and results on the screen can be flexible as well. This kind of work is supported by the program, giving you the flexibility to visualize network calculation results in different ways.

Input Data and Results

Once network elements have been created, input data can be displayed in different ways and edited. This assures you will not get confused when working with large amounts of data.

When the network calculations are finished, the results can be displayed in an easily readable form.

PSS® SINCAL can display input data and results in the following ways:

- Directly in the network diagram
- In data-input forms
- In Tabular View
- In diagrams (with a number of predefined diagram types)
- As reports

The legend in the network diagram can be assigned detailed parameters. This assures that the data you need will be displayed in the network diagram with the right parameters.

Coloring the Network Diagram

PSS® SINCAL has a function for coloring the network diagram with the help of prescribed selection criteria.

You define the type, subtype and desired color for the evaluation. This lets you display the selected network elements in the Graphics Editor in color.

Use of Filters

Another way to evaluate data displayed in the network diagram is to use filters. Filter functions let you color the network elements with the help of prescribed criteria.

Filter settings are used to locate problems, like incorrect utilization or values that exceed limits by displaying network elements in different colors, based on the value of their physical quantities.

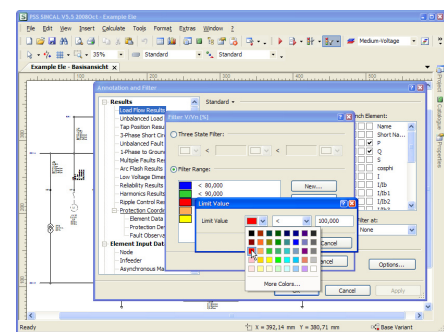


Figure 1: Filter setting for range evaluation

Effortless Network Processing

PSS® SINCAL network planning tools have enhanced functions that provide optimal support for a wide range of network planning and evaluation tasks.

Feeder

This function lets you analyze the structure of an electrical network. You can determine all the feeders in the network that start from specially designated nodes and busbars. A feeder is a network supply area leaving a station.

Feeders are determined in the following way:

- The algorithm for analyzing the network and determining the feeders starts.
- All feeders found in the network are displayed in a dialog box.

Siemens PTI – Software Solutions

Answers for energy.

SIEMENS

- These feeders can then be evaluated and visualized according to wide range of criteria.
- Feeders can even be documented as an Excel file.

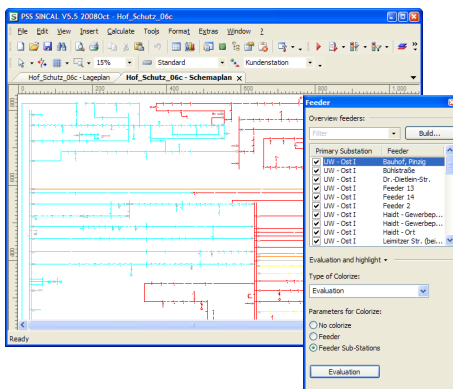


Figure 2: Feeder determination

Network elements for the feeders can also be highlighted graphically. This can be done either by storing or coloring them.

All information relevant to the planning can be called up for the feeders found (current load, transmission reserve, longest supply route, etc).

Calculating Routes

PSS[®]SINCAL has a function for calculating the routes in the network.

Basically, PSS[®]SINCAL distinguishes between simple routing for lines and enhanced routing for routes.

Lines determine the best possible (i.e. shortest) route between a defined start and end node.

The enhanced Routes option is a special optimization procedure. It determines the best possible course for a new line in accordance with an existing route structure.

Various settings (installation cost, line length etc.) set parameters for the objective of the optimization procedure.

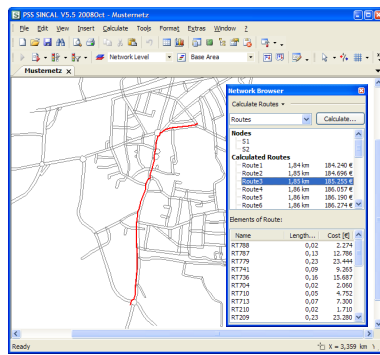


Figure 3: Determining the course of a route

Determining Line Data

This function lets you evaluate data for selected lines, letting you determine the impedance and charging power in electrical networks or pipe volume in pipe networks in a simple way.

Determining Power Data

This function evaluates the data of selected node elements, so you can easily determine supply sources and loads.

Determine Polygon Data

This function evaluates data from a selected graphic element group. This simplifies how you determine areas and load density.

Highlight Network Elements

This function makes the network elements stand out in the network diagram by highlighting them with a color. This is analogous to emphasizing text on paper with the help of a highlighter or colored marker.

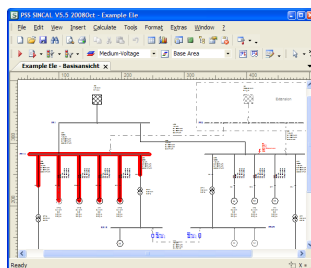


Figure 4: Highlighting a network element group

You can highlight network elements according to a wide range of criteria. These include:

- Highlighted network elements
- Operating conditions
- Topological structure
- Feeders
- etc.

ISO Areas

This tool lets you visualize a parameter in an area graphically by coloring it (or, more precisely, with the use of color progression). PSS[®]SINCAL generates background graphics and displays these below the network.

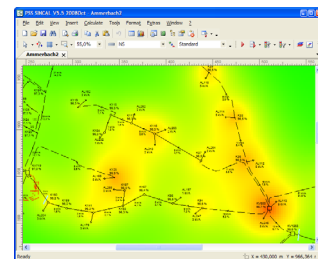


Figure 5: ISO area for load values

ISO areas let you select various different parameters to be displayed.

PSS[®]SINCAL has a special dialog box for setting ISO area parameters. In this dialog box you can select the desired parameter and set a number of different control parameters and the desired shading.

Published by and copyright © 2009:
Siemens AG
Energy Sector
E D SE PTI
Freyeslebenstrasse 1
91058 Erlangen, Germany

www.siemens.com/energy/power-technologies

Siemens Energy, Inc.,
Power Distribution, T&D Service Solutions
Siemens Power Technologies International
400 State Street
PO Box 1058
Schenectady, NY 12301-1058

Siemens Transmission and Distribution Ltd
PTI
Sir William Siemens House, Princess Road
Manchester, M20 2UR
United Kingdom

For more information, please contact our
Customer Support Center.
Phone: +49 180 524 70 00
Fax: +49 180 524 24 71
(Charges depending on provider)
E-mail: support.energy@siemens.com

Power Distribution Division
Printed in Germany
Printed on elementary chlorine-free
bleached paper.

All rights reserved.
Trademarks mentioned in this document
are the property of Siemens AG, its affiliates,
or their respective owners.
Subject to change without prior notice.
The information in this document contains general
descriptions of the technical options available,
which may not apply in all cases.
The required technical options should therefore be
specified in the contract.

SWSC84-EN-200905